



# MEETING of Yate Town Council's Environment and Community Committee

Wednesday 2 November 2022

You are invited to attend a Meeting of the **ENVIRONMENT AND COMMUNITY COMMITTEE** of **Yate Town Council** to be held at Poole Court on **Tuesday 8<sup>th</sup> November 2022** between 7.00pm - 9.00pm for the purpose of transacting the business set out in the Agenda below.

Hayley Townsend  
Town Clerk

## Agenda

*In the exercise of Council functions, Members are reminded that the Council has a general duty to consider Crime & Disorder, Health & Safety, Human Rights and the need to conserve biodiversity. The Council also has a duty to tackle discrimination, provide equality of opportunity for all and foster good relations in the course of developing policies and delivering services under the public sector Equality Duty and Equality Act 2010.*

*In the event of a fire alarm or other emergency (signalled by a continuously ringing bell), please exit the Council Chamber and leave the building through the nearest fire exit or safest evacuation route. Please meet by the flag pole in the car park. (NB: The nearest fire exit is located at the end of the corridor. (Exit the Council Chamber and turn right)).*

1. Apologies for Absence.
2. Declarations of Interest under the Localism Act 2011

*Members who consider that they have an interest are asked to: (a) State the item number in which they have an interest, (b) The nature of the interest, (c) Whether the interest is a disclosable pecuniary interest, non-disclosable pecuniary interest or non-pecuniary interest.*



3. Public Participation Session with Respect to Items on the Agenda
4. To receive and approve the Minutes of the Environment and Community Committee meeting held on 28<sup>th</sup> September 2022.  
[Click here for minutes](#)
5. To consider the following Items on the Clerk's Report:

**Item 1            Items for Discussion/Requiring Resolution or Recommendation to Full Council**

- 1/1    Consultations
  - a) Covid Commemoration Consultation
  - b) Urgent Consultations
- 1/2    Environment and Community Committee First Draft Proposed Budget 2023/2024
- 1/3    Park Security
- 1/4    Climate & Planet Commitment – Highway Verges
- 1/5    Consideration of Impact of Decisions on Climate & Waste

**Item 2            Items for Noting**

- 2/1    Estates Manager's Report
- 2/2    Status of all groups that report to the Environment and Community Committee
- 2/3    Yate Ageing Better, Health & Wellbeing Sub-Committee
- 2/4    Leases
- 2/5    Women's Football
- 2/6    Consultations
- 2/7    Armadillo Service Provision Contingency Plan
- 2/8    Climate and Planet Commitment
- 2/9    Graffiti and Litter
- 2/10   Outstanding Items

**Item 3            Confidential Items**

That in view of the confidential nature of the business about to be transacted, pursuant to the Public Bodies (Admission to Meetings) Act 1960, it is advisable in the public interest that any members of the press or public present be excluded and they be instructed to withdraw.

# Clerks Report

## Yate Town Council Meeting of the Environment and Community Committee 8<sup>th</sup> November 2022

### Clerk's Report

#### Item 1 Items for Discussion / Requiring Resolution or Recommendation to Full Council

##### 1.1 Consultations

###### a) Consultations Received

**Covid Commemoration Consultation - Cabinet Office  
Closing Date; 5 December 2022**

[Click here for consultation](#)

###### b) Urgent consultations

To receive any urgent consultations.

##### 1.2 Environment and Community Committee First Draft Proposed Budget 2023/2024

To receive update in relation to the Environment & Communities 2023/2024 draft budget. (To be circulated)

##### 1.3 Park Security

Historically Millside play area car park is unlocked and locked by the estates team as follows.

Monday – Thursday, unlocked 8.30am, Locked at 3.30pm  
Fridays unlocked 8.30am, Locked at 3.00pm

Weekend the car park is kept locked.  
Signage is on site advising the above times.

When the team arrives to lock the car park in the spring and summer months, they have to ask parents to move their cars onto the drive so they can lock the car park,

and which can be difficult for them as they can't leave their children unsupervised so have to put them in the car and tend to leave.

On other occasions car owners do not own up to it being their car and the car park is left unlocked.

To **RECEIVE** recommendation from the Estates Manager.

## **1.4 Climate and Planet Commitment**

### **a. Managing Highway Verges for Nature:**

To receive;

- a. Apologies from Matthew Lipton (Biodiversity Assets and Commons Manager at South Gloucestershire Council) who could not make this meeting due to a Local Nature Action Plan event;
- b. Appendix 1 SGC Verges Presentation on behalf of Matthew Lipton
- c. Further information in the Managing Highway Verges for Nature proposal for Yate:
  - i. The project aims to identify opportunities and actions for habitat and biodiversity improvement, that can be implemented nationally in non-recreational green spaces, e.g. verges;
  - ii. SGC surveyed over 5000 verges to identify opportunities/ actions for habitat and biodiversity improvement on verges;
  - iii. The trial hopes to demonstrate a reduction in CO<sub>2</sub> (approx. 100tonnes pa) and an increase in biodiversity value (approx. 8-10%) through the reduction in cutting programs (where safe to do so);
  - iv. SGC have chosen Yate as the area for a trial due to:
    1. YTC's ambitions for biodiversity improvements and expression of interest in this pilot project;
    2. YTC/Yate has an Local Nature Action Plan (LNAP);
    3. Close proximity to SGC machinery depots and central office - reducing carbon in equipment travel and providing close by management/ implementation support;
    4. Trial needs to be at significant scale, Yate can provide scale required.
  - v. Trial will commence in 2023 cutting season April, throughout the seasons, cuts will be reduced from approx. 4-5 cuts per season, aiming for 1-2 cuts pa in future years;
  - vi. initially leaving grass longer in between cuts, it will be more dense, over time grass will adjust to cutting patterns and density will reduce/ will become easier to cut;
  - vii. if adopted this approach could impact on costs of Localism Contract and Special Expenses. In initial phases, costs may remain the same/ increase as more fuel is needed to cut longer/ denser grass. As grass becomes less dense, less fuel/ cuts are needed and charges could reduce in line – if there are expected cost increases, SGC will consult towns and parishes on cutting

- plans for their areas. YTC may need to consider cost of charges vs ecological value added;
- viii. Long term, cut collection could be used to create bio fuel, this trail will support these investigations.

It is **RECOMMENDED**, as part of the Town Council’s Climate and Planet Commitment, and to support the aims of the Local Nature Action Plan (LNAP), the Town Council agree to support this pilot project, by positively promoting this project to the public; and to work with SGC officers, to gain insight into biodiversity improving and carbon reducing practices, in the management programs of green spaces.

## 1.5 Consideration of Impact of Decision on Climate and Waste

To consider if there are any impacts on climate and waste following decisions taken during this meeting.

## 2. ITEMS FOR NOTING

### 2.1 Estates Manager’s Report

To receive Estate Manager’s Report with items for noting.

[Click here for Estate Managers Report](#)

### 2.2 Status of all groups that report to Environment & Community Committee

To **NOTE** the following;

Sub-Committee/Group	Date of Meeting/Update	Appendix
Venues	Report for the period	<a href="#">Click here to read Venues Report</a>
Station Road Sites	Updated action plan appended	<a href="#">Click here for action plan</a>
Learning Partnership West (LPW) Youth Provision	Meeting notes 05.10.22	<a href="#">Click here for notes of the meeting of 5.10.22</a>
Events	Meeting took place on 12th. October 2022  To further <b>NOTE</b> that additional funds have been added to the 2023 budget to cover Block Street Trading Licences for	<a href="#">Click here for notes of the meeting of 12.10.22</a>

	<p>Town Council Events. £600 per venue . (South Gloucestershire Council have been asked to review their interpretation of legislation that adversely effects community groups. Any review is not likely to take place until after May 2023)</p> <p>Events likely to be affected are:  St George' Event April 2023  Possible Coronation Event  Yate Rocks! June 2023  Yate Ageing Better June 2023</p>	
Joint Parishes Consultative Committee	No update	
Allotments	Due to several unsuccessful attempt to arrange a meeting, representatives from the former Abbotswood Action Group have been asked to confirm some dates they are available to meet with members in November to discuss plans for the allotments and to form an association.	
Public Rights of Way, Commons and Greens Sub-Committee	The SGC consultation in respect of Public Right of Way LYA 45 was received at the meeting of the Planning and Transportation Committee on 1 November 2022.	
Reports from Representatives on Outside Bodies	Minutes received from outside bodies were previously circulated to Members with a request to advise if they wish to discuss matters contained therein.	<a href="#">Click here for details of outside bodies</a>
Town Centre Strategy Group	A meeting was held on 24 <sup>th</sup> October 2022.	<a href="#">Click here for minutes of 24.10.22</a>

### 2.3 Yate Ageing Better Health and Wellbeing

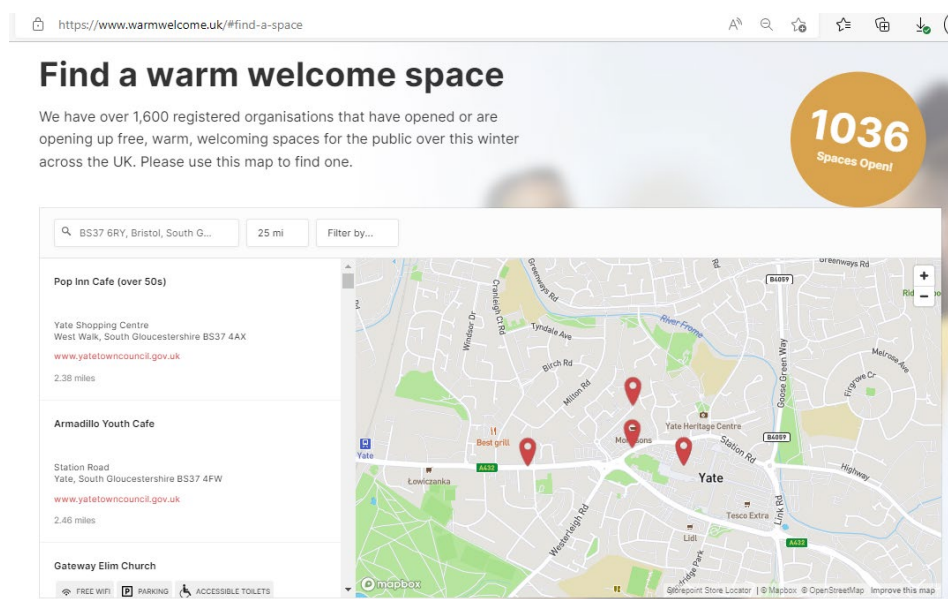
To **NOTE:**

- a) Dementia Café volunteer advert is in final draft, due to be published in early November 2022;
- b) The Warm Welcome launched on 3<sup>rd</sup> October, the guide will be updated and republished in the first week of every month. Attendance to YTC venues is

being recorded and monitored to inform provision going forward.

- c) Officers are in the process up uploading YTC venues to the Bristol Open Space Directory “Well Aware”;
- d) All YTC venues have been uploaded to the Warm Welcome Interactive Map [Find a Warm Welcome Space Today](#) joining over 1,600 registered organisations across the UK, that have opened or are opening up free, warm, welcoming spaces for the public over this winter. Partner venues have been encouraged to upload their spaces.

Image of YTC Warm Welcome location/ venue map:



## 2.4 Leases for Ridgewood, The Common (including pitches) and Witches Hat

To **NOTE** that South Gloucestershire Council has been chased for movement on leases for Ridgewood, The Common (including pitches, the lease for which expires in September 2022) and Witches Hat (the lease for which expired in September 2015).

## 2.5 Women’s Football

To **NOTE** an update was provided to Full Council on 6<sup>th</sup> September 2022 and a response is awaited.

## 2.6 CONSULTATIONS

### a) Consultations Received

No current consultations to report.

## b) Consultation Responses

Consultation Name	Link/Appendix	Date Circulated	Closing Date	Notes
SGC new draft strategy for 'Electric Vehicle Charging' The aim of the strategy is to establish our role in ensuring that our residents and visitors who need to drive cars – where cycling, walking or public transport is not practicable - are supported to do so in zero emission vehicles.	<a href="#">Click here for Consultation</a>	12.7.22	3.10.22	To <b>NOTE</b> comments submitted by Councillor Chris Willmore on 3.10.22  <a href="#">Click here to read response</a>

### 2.7 Armadillo; Service Provision Contingency Plan

To **NOTE**:

- An unconditional offer has been made for the role of Senior Youth Coordinator;
- A conditional offer has been made for the role of Youth Coordinator;
- Start dates for the above roles are planned for November 2022, Community Projects staff will continue to support the provision until both roles are inducted, likely until the end of December 2023;
- Youth sessions indoors closed on 21.10.22 and between 25.10.22 and 28.10.22 (half term), due to low staffing resources. The Youth team were deployed to detached in the community. During this period they also undertook youth contact admin and mental health training.

### 2.8 Climate and Planet Commitment

To **NOTE** Climate and Planet Commitment update.

[Click here for update.](#)

### 2.9 Graffiti and Litter

To **NOTE** graffiti has been reported on a wall at Mow Barton and has been planned in the works programme for removal. Tagging has been identified on utilities boxes rear of Lidl and has been programmed into the works schedules for removal.

### 2.10 Outstanding Items

To **NOTE** status of pending log. [Click here for pending log.](#)

## Item 3. Confidential Items



*That in view of the confidential nature of the business about to be transacted, pursuant to the Public Bodies (Admission to Meetings) Act 1960, it is advisable in the public interest that any members of the press or public present be excluded and they be instructed to withdraw.*

To receive any confidential items

To **RESOLVE** to return to public session.



# Managing Highway Verges for Nature

---

As we face climate change and threats to biodiversity, we have been considering how we can manage our assets better to increase biodiversity and reduce our carbon footprint.

# The benefits of managing Highway Verges for Nature



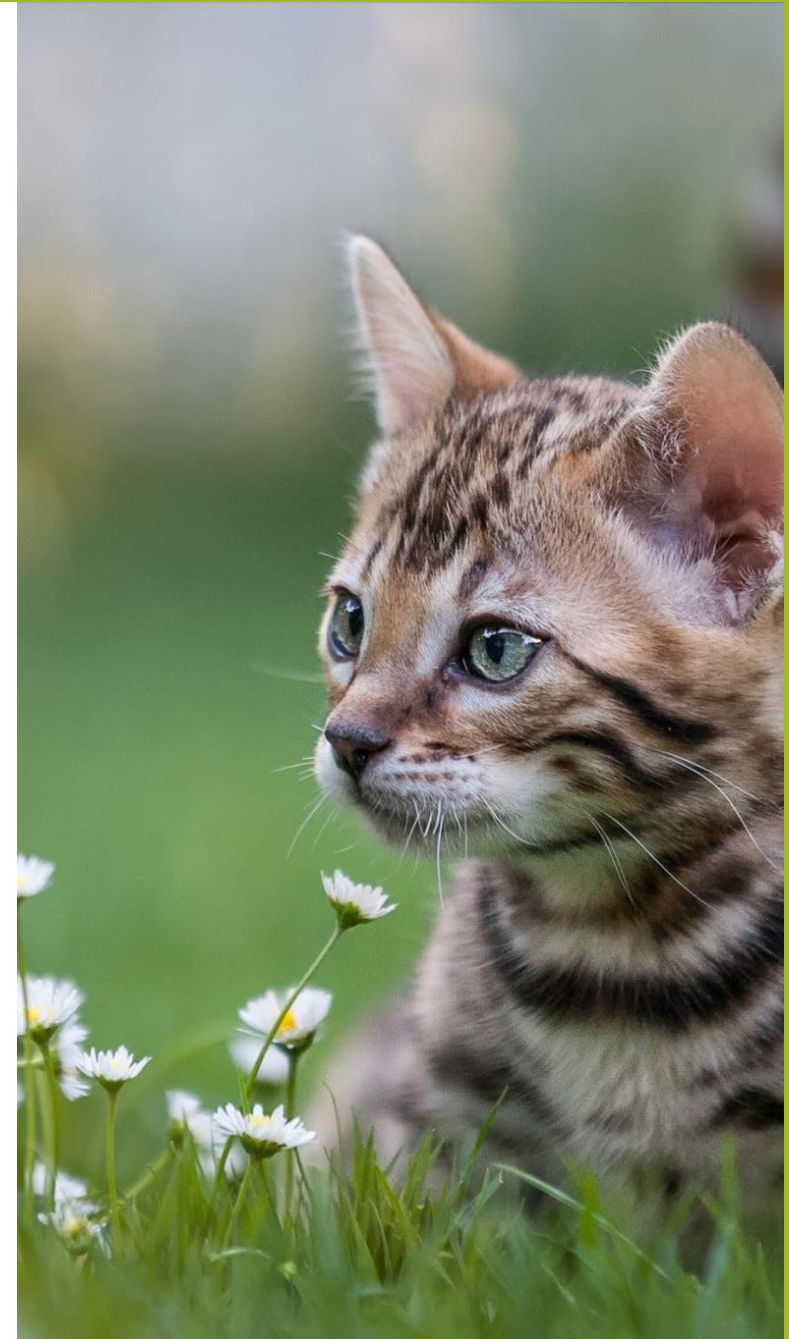
Carbon  
Reduction



Biodiversity  
Increase

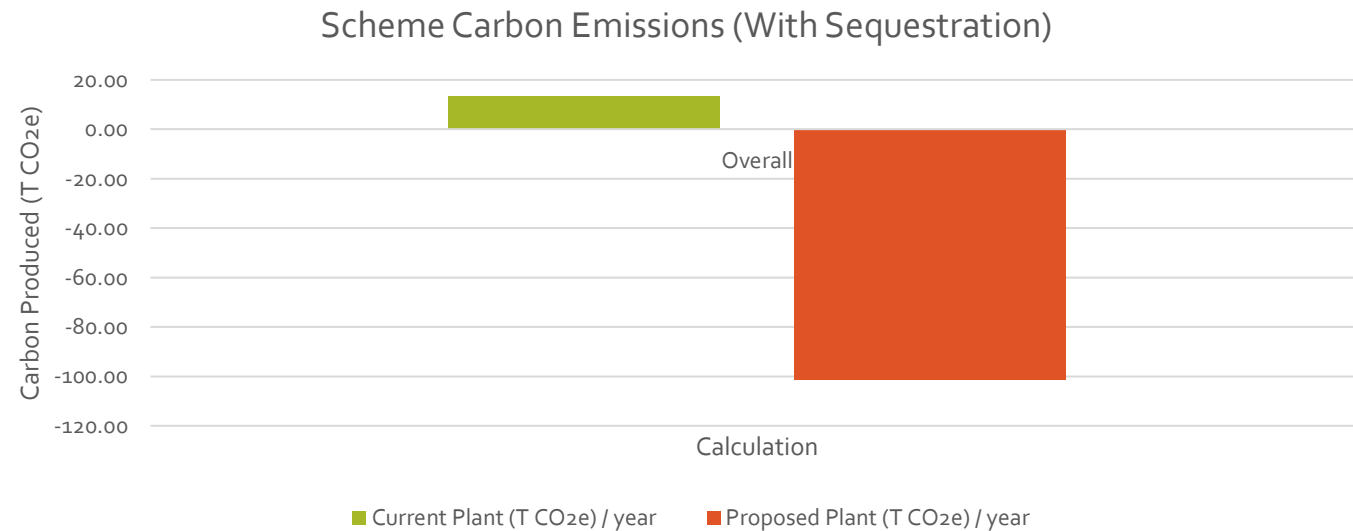


Improved  
Habitats



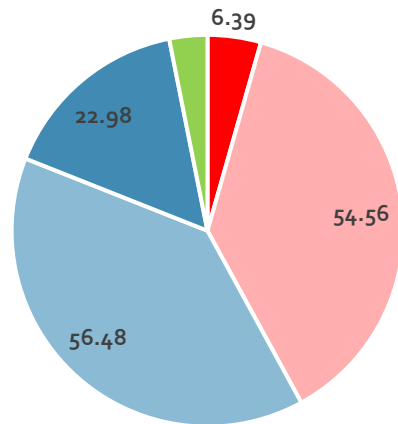
# Carbon Reduction

- By rolling out the changes across selected areas across South Gloucestershire, we could reduce our carbon emissions by 101.51 tonnes of CO<sub>2</sub> per year.
- We are investigating the use of biofuels which will reduce this figure further.



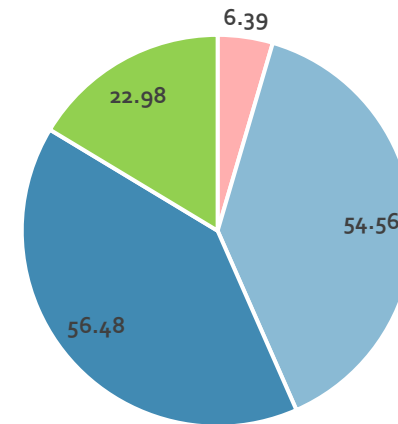
# Biodiversity Increase

Baseline - Condition Score by Area (Hectares)



■ Poor ■ Fairly Poor ■ Moderate ■ Fairly Good ■ Good

Predicted - Condition Score by Area (Hectares)



■ Poor ■ Fairly Poor ■ Moderate ■ Fairly Good ■ Good

- We have predicted an increase of 8% in habitat units in the first year.
- Highway Verges will be more biodiverse and resilient to future flooding and droughts.

# Habitats

**Changes will result in an increase in:**

- Pollinating insects
- Grasses
- Wildflowers
- Small mammals
- Birds
- Etc...





# Survey of Highway Verges and Public Open Spaces where it would be safe and practical to manage for nature

- We undertook a survey (March – July 2022) to identify Highway Verges and Public Open Spaces which would be suitable for improved management
- **We considered:**
  - The safety of pedestrians and road users
  - Practicality for machinery
  - Biodiversity hotspots
  - Amenity areas





# The Yate Trial

## What we are proposing:

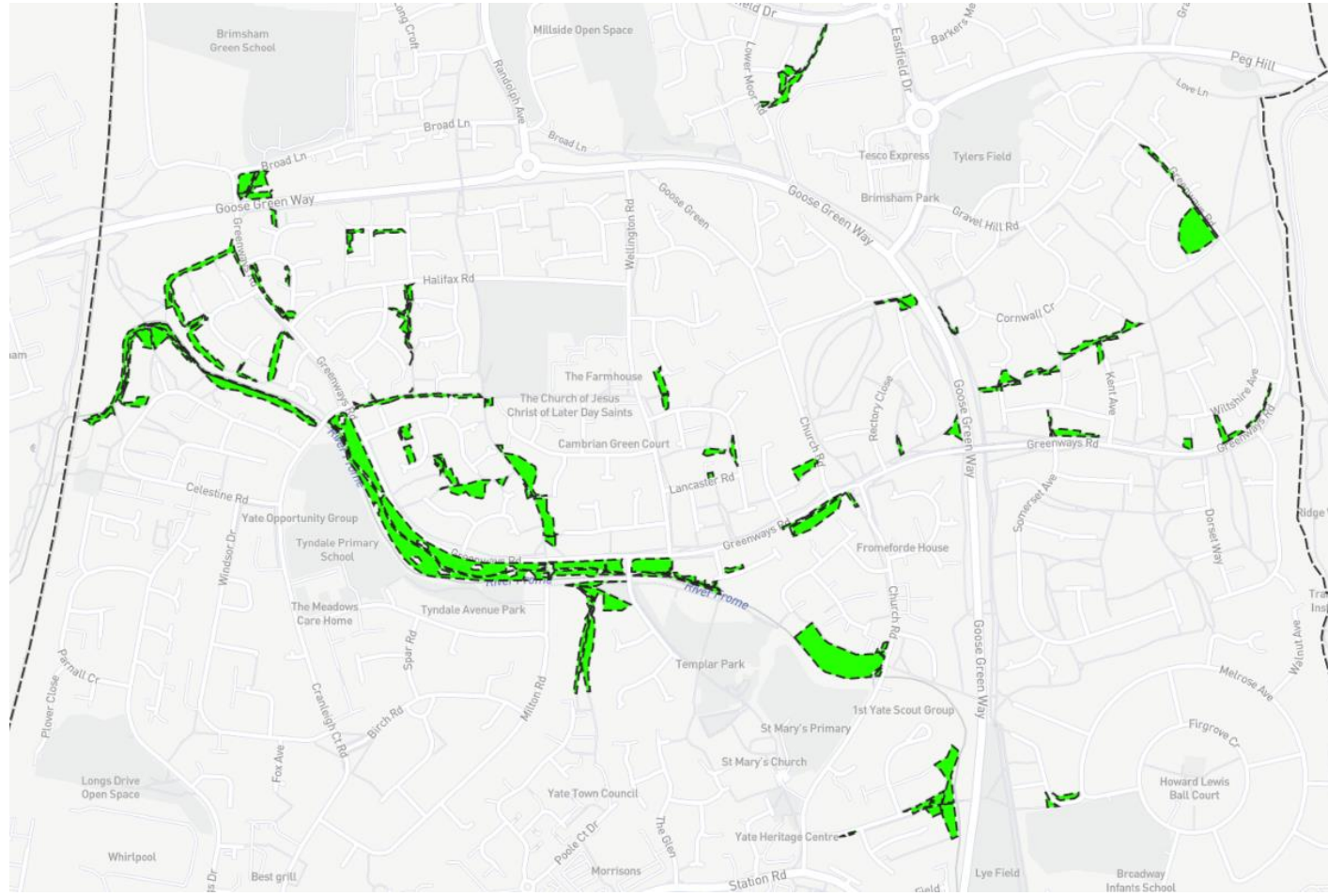
- Reduced frequency cuts and collecting material to encourage wildflower growth, improve biodiversity and soil conditions.
- Aspire to dispose of grass cuttings by anaerobic digestion to produce green energy.

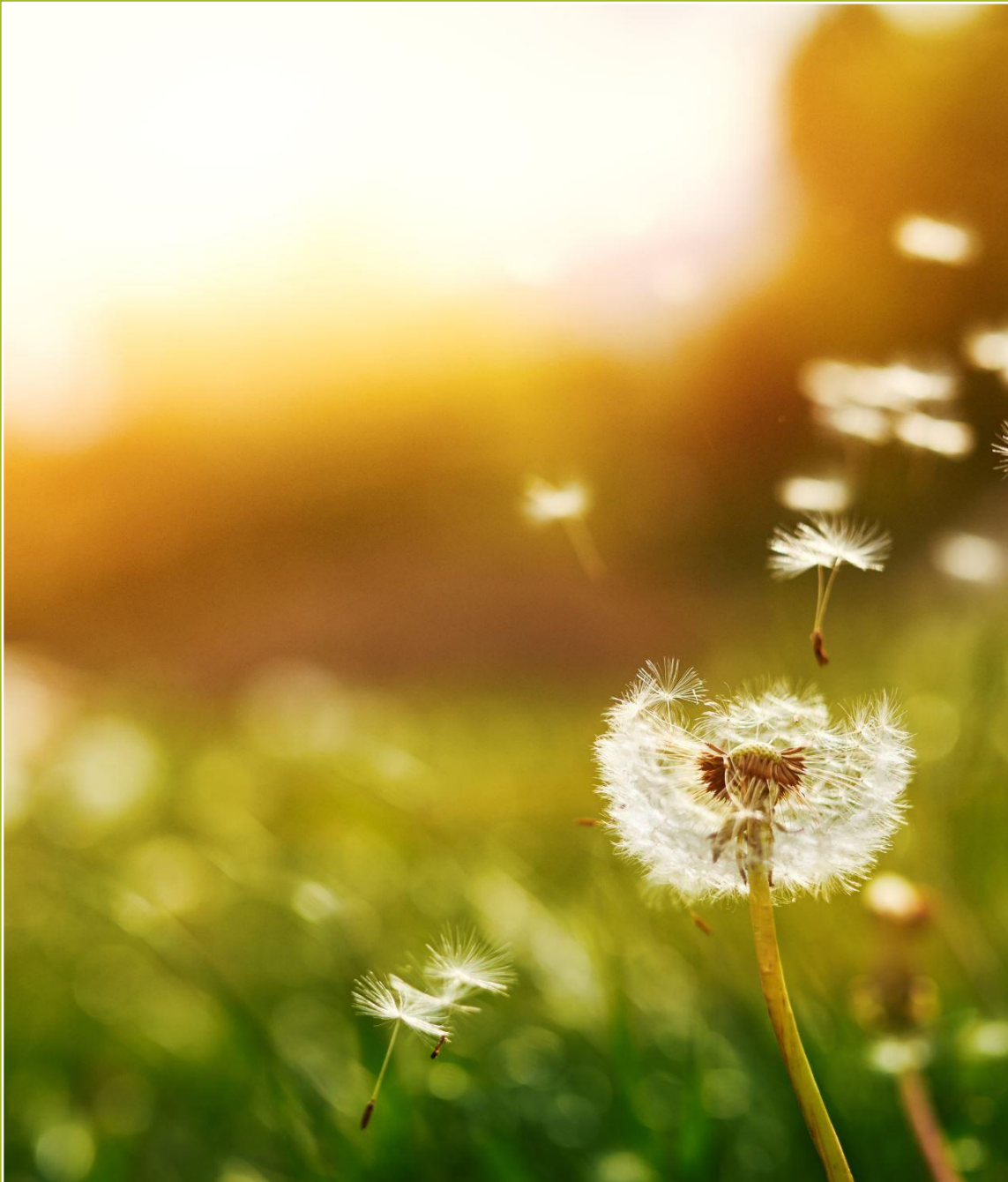
## Impacts:

- No financial cost for the trial.
- Future maintenance costs may increase or decrease as a result of the trial.
- Improved biodiversity.



# Proposed Route - Yate





# Any Questions?

[Matthew.Lipton@southglos.gov.uk](mailto:Matthew.Lipton@southglos.gov.uk)